



**PROMOTIE
TOERISME
OOSTENDE**

Confidential

Tariff

1984

GROUP-RATES 1984 OSTEND

Rate p. p. in BF.	C A P.	Bed & breakfast	Half- board	Full- board	Suppl. single
HOTELS	P E R S.	Room / wash- basin	Room / wash- basin	Room / wash- basin	Stand.
BRUGES-BALMORAL ★	70	350	460	520	40
VICTORIA ★	60	350	600	800	100
MARION	50	350	500	600	75
MYRA	60	375	525	625	75
EMPIRE ★	50	375	475	575	60
THEVENET ★	50	395	590	795	100
MELBOURNE ★	80	395	590	785	100
DU NORD	50	400	600	700	—
GEORGE V	100	400	—	—	—
MAYFAIR	100	400	600	—	50
PARC LEOPOLD	40	400	—	—	50
MIRAMAR ★	50	400	700	860	—
ROYAL MIDLAND	50	400	550	700	—
NOTRE PATRIE	30	420	875	950	—
CARLTON	100	425	650	850	25
SUN SQUARE	60	425	575	725	—
YELTON	50	450	630	—	—
BIARRITZ	60	475	600	720	80
STELLA MARIS	150	525-650	775-1.000	1.050-1.325	150-175
DU PARC	80	650-700	—	—	150

★ see photo

★ RATES are net and valid for groups of min. 20 pers.

★ FREE PLACES: 1 per 40 pers. / 2 per 60 pers.

★ GROUP-RATES for complete series on request

GROUP-RATES 1984 OSTEND

Rate p. p. in BF.	C A P.	Bed & breakfast	Half- board	Full- board	Suppl. single
HOTELS	P E R S.	Room / bath or show	Room / bath or show	Room / bath or show	Bath or show
PRIMULA	30	450	700	850	75
PACIFIC ★	100	475-600	775-900	—	200
ARIEL	22	500	800	—	—
DERBY ★	40	500	750	900	100
BAUDOUIIN ★	50	550-650	—	—	125-150
ROYAL ASTOR ★	160	550-600	800-850	850-950	100
OCELOT ★	30	600	900	—	150
TELSTAR	40	600	—	—	250
BURLINGTON ★	80	650	875	—	150
EUROPE ★	110	659-850	1.100	—	350
PRINCESS ★	90	650	1.000	—	250
BERO ★	120	675-700	975-1.000	—	250
PRADO ★	60	700	—	—	400
ADMIRAL	140	750-800	1.070-1.120	—	200
OSTEND PALACE	330	750-800	1.070-1.120	—	200
WESTMINSTER	100	750-800	1.070-1.120	—	200
DANIELLE ★	60	800	1.125	1.250	200
IMPERIAL ★	70	800	1.175	1.550	100
TER STREEP	60	800	—	—	200
AMBASSADEUR	45	900	1.400	1.800	600
BELLEVUE-BRITANNIA	95	900	—	—	150
MELINDA	70	900	—	—	200
THERMAE PALACE	100	950	1.625	2.300	400

CALL ... 010/32/59/80.33.15 or 50.06.60 or TELEX 0026/81941

GROUP-RATES 1984 OSTEND YOUTH / SCHOOLPARTIES

Rate p. p. in BF.	C A P.	Bed & breakfast	Half- board	Full- board	Suppl. single
HOTELS	P E R S.	Room / wash- basin	Room / wash- basin	Room / wash- basin	Stand
ROYAL MIDLAND	50	300	450	600	—
NOTRE PATRIE	30	320	575	730	—
SUN SQUARE	60	325	500	600	—
BRUGES-BALMORAL ★	70	330	450	500	—
MARION	50	340	450	525	75
DU NORD	50	350	400	500	—
EMPIRE	50	350	450	550	50
MAYFAIR	100	350	450	550	50
PARC LEOPOLD	40	350	—	—	50
MYRA	60	350	475	550	75
MIRAMAR ★	50	350	520	610	—
YELTON	50	350	450	550	—
DE PLOATE	90	360	560	660	—
PACIFIC (annex)	40	360	610	—	—
DERBY (Fac.) ★	40	375	525	675	100
MELBOURNE ★	80	375	550	650	100

★ see photo

★ RATES are net and valid for groups of min. 20 pers.

★ FREE PLACES: 1 per 30 pers. / 2 per 60 pers.

★ GROUP-RATES for complete series on request.

CALL ... 010/32/59/80.33.15 or 50.06.60 or TELEX 0026/81941

GROUP-RATES 1984 OSTEND YOUTH / SCHOOLPARTIES

Rate p. p. in BF.	C A P.	Bed & breakfast	Half- board	Full- board	Suppl. single
HOTELS	P E R S.	Room / wash- basin	Room / wash- basin	Room / wash- basin	Stand
THEVENET ★	50	375	570	765	100
BIARRITZ	60	400	475	550	80
CARLTON	100	425	650	850	25
STELLA MARIS	150	480-600	700-910	940-1.200	150-175
ADMIRAL (Fac.)	140	—	650-725	700-775	200
OSTEND PALACE (Fac.)	330	—	650-725	700-775	200
WESTMINSTER (Fac.)	100	—	650-725	700-775	200
EUROPA (Bredene) ★	110	290	380	450	10 %
TONALUC (Bredene) ★	60	300	400	500	—
MEEUWENHOF (Bredene)	80	—	—	430	—
PARKHOTEL (Wenduine)	60	400	560	660	—
SANDESHOVED (Nieuwpoort)	260	380-430	450-500	530-580	—
DE PEERDEVISSER (Oostd.)	100	305	480	655	—
OP SINJOORKE (Antwerpen)	130	305	480	655	—
BREUGHEL (Brussel)	130	445	640	835	85
SABOT D'OR (Blankenberge)	120	350	580	640	—

★ see photo

Notes:

CALL ... 010/32/59/80.33.15 or 50.06.60 or TELEX 0026/81941

SAMPLE MENUS

MENU 1

330 BF.

Soup of the day

☆ ☆ ☆

Fishfilet - Tartarsauce - Chips

or

Chicken with mushroomsauce - Croquettes

or

Roast sirloin - Madeire-sauce - Croquettes

☆ ☆ ☆

Dessert

MENU 2

400 BF.

Soup of the day or Cheese croquettes or Chef's Paté

☆ ☆ ☆

Porkchop "Grand-mère" - Chips

or

Fishfilet "Portugaise" - Rice

or

Chicken with Tarragon - Croquettes

☆ ☆ ☆

Dessert

- ★ MENUS: are for groups of min. 20 pers.
Alternative menus can be obtained on request.
- ★ PRICES: are per person and include service, V.A.T. and taxes.
- ★ PERSONS FREE: 1 per 30 pers. - 2 per 50 pers.

SAMPLE MENUS

MENU 3

450 BF.

Russian Egg of Fried Scampis or Prawn cocktail

☆ ☆ ☆

Roast pork - Vegetables - Potatoes

or

Eel in green sauce - Chips

or

Turkey with pineapple - Croquettes (in season)

☆ ☆ ☆

Dessert

MENU 4

500 BF.

Seafood cocktail

or

Smoked Salmon

☆ ☆ ☆

T-bone steak - Bearnaise sauce - Salad - Chips

or

Plaice "Colbert" - Chips

☆ ☆ ☆

Dessert & Coffee

★ GROUP-MEALS can also be arranged in other cities such as BRUGES - GHENT - BRUSSELS and ANTWERP (Rates upon Request)
★ P.T.O. also provides a FREE restaurant service for groups booked in hotels on B/B basis and for transit groups.

TRANSFERS 1984

PRICE PER COACH QUOTED IN BELGIAN FRANCS	20 Seater	30 Seater	40 Seater
OSTEND PORT / AIRPORT RAILWAY TO HOTEL OSTEND	1.280	1.490	1.700
BRUSSELS AIRPORT / RAILWAY TO HOTEL OSTEND	9.420	9.950	10.480
FROM OSTEND TO	20 Seater	30 Seater	40 Seater
ANTWERP	7.740	8.270	8.800
BRUGES	2.950	3.480	4.010
BRUSSELS	7.740	8.270	8.800
GHENT	4.650	5.180	5.700
CALAIS	6.720	7.250	7.780
DUNKIRK	4.350	4.880	5.410
FROM ZEEBRUGGE TO	20 Seater	30 Seater	40 Seater
ANTWERP	8.270	8.800	9.330
OSTEND	3.300	3.800	4.300
BRUGES	3.480	4.010	4.540
BRUSSELS	8.360	8.890	9.420
GHENT	5.180	5.710	6.240
CALAIS	7.250	7.780	9.370

★ Quotations for other transfers are given on Request

★ Rates are excluding 6% V.A.T.

TRANSFERS 1984

50 Seater	54 Seater	63 Seater	81 Seater (Lux.)	81 Seater (Sup. Lux.)
1.910	2.120	2.200	2.870	7.373
11.000	11.540	12.650	16.500	18.836
50 Seater	54 Seater	63 Seater	81 Seater (Lux.)	81 Seater (Sup. Lux.)
9.330	9.860	10.730	14.000	18.025
4.540	5.070	5.220	6.810	8.992
9.330	9.860	10.730	14.000	18.025
6.240	6.770	7.180	9.360	12.229
8.310	8.840	9.560	12.470	16.407
5.940	6.470	6.840	8.910	12.361
50 Seater	54 Seater	63 Seater	81 Seater (Lux.)	81 Seater (Sup. Lux.)
9.860	10.390	11.340	14.790	16.407
4.800	5.050	5.520	7.200	8.992
5.070	5.600	5.830	7.610	8.182
9.950	10.480	11.450	14.930	16.407
6.770	7.300	7.790	10.160	11.419
9.900	10.430	11.390	14.850	16.407

CALL ... 010/32/59/80.33.15 or 50.06.60 or TELEX 0026/81941

1/1 DAY EXCURSION EX OSTEND 1984

PRICE PER COACH QUOTED IN BELGIAN FRANCS	20 Seater	30 Seater	40 Seater
ANTWERP	9.860	10.400	10.920
BRUGES	6.130	6.660	7.190
BRUSSELS	9.860	10.390	10.920
GHENT	7.830	8.360	8.890
YPRES	6.980	7.510	8.040
AMSTERDAM	16.290	16.820	17.350
KEUKENHOF	16.010	16.540	17.070
MIDDELBURG	7.830	8.360	8.890
SLUIS	7.300	7.800	8.300
DUNKIRK	6.470	7.000	7.530
PARIS	17.660	18.190	18.720
LUXEMBURG	18.020	18.550	19.080

1/2 DAY EXCURSION EX OSTEND 1984

PRICE PER COACH QUOTED IN BELGIAN FRANCS	20 Seater	30 Seater	40 Seater
MELIPARK (Adinkerke)	3.500	4.030	4.560
BELLEWAERDE	4.860	5.390	5.920
BRUGES	4.010	4.540	5.070
SLUIS	5.300	5.800	6.300
GHENT	5.710	6.240	6.770
YPRES	6.980	7.510	8.040

★ Rates are excluding 6% V.A.T.

CALL ... 010/32/59/80.33.15 or 50.06.60 or TELEX 0026/81941

1/1 DAY EXCURSION EX OSTEND 1984

50 Seater	54 Seater	63 Seater	81 Seater (Lux.)	81 Seater (Sup. Lux.)
11.450	11.980	13.170	17.180	21.525
7.720	8.250	8.880	11.580	14.242
11.450	11.980	13.170	17.180	21.525
9.420	9.950	10.840	14.130	17.479
8.570	9.100	9.860	12.860	15.861
17.880	18.410	20.570	26.820	34.236
17.600	18.130	20.240	26.400	32.988
9.420	9.950	10.840	14.130	17.479
8.800	9.050	10.120	13.200	15.861
8.060	8.590	9.270	12.090	15.050
19.250	19.780	22.140	28.880	32.988
19.610	20.140	22.560	29.420	40.469

1/2 DAY EXCURSION EX OSTEND 1984

50 Seater	54 Seater	63 Seater	81 Seater (Lux.)	81 Seater (Sup. Lux.)
5.090	5.620	5.860	7.640	10.742
6.450	6.980	7.420	9.680	12.361
5.600	6.130	6.440	8.400	10.742
6.800	7.050	7.820	10.200	12.361
7.300	7.830	8.400	10.950	13.979
8.570	9.100	9.860	12.860	12.361

CALL ... 010/32/59/80.33.15 or 50.06.60 or TELEX 0026/81941

ACCOMMODATION for INDIVIDUALS 1983/84

If the contracting of an allocation of beds might be somewhat too ambitious for you to achieve ... we can also be of help.

P.T.O. offers you a free reservation-scheme for your individual clients at guaranteed rates.

Alle you need to do is send us a telex, phone us, ... and your reservation will be confirmed within 24 hours.

WINTER 83/84 (1/10/83 - 31/3/84)		
Hotel-category	Twin	Single
A (rooms / bath / wc)	1.500 BF.	950 BF.
	Hotel Prado or similar	
B (rooms / bath or show)	1.300 BF.	850 BF.
	Hotel Bero or similar	
C (standard rooms)	850 BF.	500 BF.
	Hotel Cardiff or similar	
SUMMER 84 (1/4/84 - 30/9/84)		
Hotel-category	Twin	Single
A (rooms / bath / wc)	1.700 BF.	1.050 BF.
	Hotel Prado or similar	
B (rooms / bath or show)	1.400 BF.	950 BF.
	Hotel Bero or similar	
C (standard rooms)	900 BF.	600 BF.
	Hotel Cardiff or similar	

★ Rates are given in belgian francs and are net per room per night (fully inclusive) on the basis of bed & breakfast.

GUIDES

1984

P.T.O. only employ professionally qualified guides

Fees: 600 BF. (for 2 hours) - ★ 1/2 day (± 3 hrs.): 900 BF.
300 BF. (for each additional hour) - ★ 1/1 day (± 6 hrs.): 1.800 BF.

Note: - The fees are inclusive of V.A.T.

- Eventual travel expenses are not included.
- In addition, if a lunch is not provided on a full day tour, a 350 BF. lunch allowance is payable.

CALL ... 010/32/59/80.33.15 or 50.06.60 or TELEX 0026/81941

HOTELS OOSTENDE



BRUGES - BALMORAL



VICTORIA



EMPIRE



MELBOURNE



THEVENET



THEVENET



MIRAMAR



DERBY

HOTELS OOSTENDE



PACIFIC



PACIFIC



OCELOT



OCELOT



BAUDOIN



BAUDOIN



ROYAL ASTOR



ROYAL ASTOR

HOTELS BRUSSEL



SHERATON



SHERATON



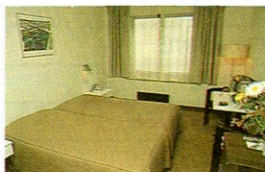
BEDFORD



ARCADE STEPHANIE



ARENBERG



ARENBERG



PALACE



PALACE

GROUP-RATES 1984

Rate p. p. in BF.	HOTELS	Cap. Pers.	Bed & Breakfast	
			Room / wash-basin	Room / bath or show.
BRUSSEL				
	SHERATON ★	1.000	—	1.350
	HILTON	700	—	1.255
	MAYFAIR	200	—	1.250
	HYATT	600	—	1.040
	BEDFORD ★	500	—	1.020
	ARCADE STEPHANIE ★	300	—	875-975
	ARENBERG ★	300	—	880
	PALACE ★	700	—	880
	DELTA ★	520	—	850
	DIPLOMAT ★	130	—	850
	FORUM ★	150	—	800
	ASTORIA ★	150	—	800
	ARCADE STE-CATHERINE ★	400	—	765
	AGENDA ★	70	—	750
	ALFA-LOUISE ★	100	—	750
	QUEEN ANNE	110	—	740
	VAN BELLE	160	—	740
	COUNTY HOUSE	200	—	700-800
	DU RHIN	200	525	600-650
	BREUGHEL	130	445	—
ANTWERPEN				
	CONGRESHOTEL	120	—	910
	EUROTEL ★	600	—	855
	HOLIDAY-INN ★	360	—	800-1.000
	CREST	600	—	775
	NOVOTEL ★	500	—	735
	TOURIST ★	250	—	540
	OP SINJOORKE	130	350	—

★ see photo

GROUP-RATES 1984

Halfboard		Fullboard		Suppl. Single	
Room / wash-basin	Room / bath or show.	Room / wash-basin	Room / bath or show.	Stand	Bath or show.
—	1.850	—	2.450	—	1.000
—	1.855	—	2.455	—	600
—	1.650	—	2.050	—	600
—	1.680	—	—	—	650
—	1.420	—	1.820	—	375
—	1.225-1.325	—	1.725-1.825	—	525
—	1.300	—	1.720	—	400
—	1.300	—	1.720	—	400
—	1.250	—	1.600	—	400
—	1.250	—	1.600	—	400
—	1.150	—	1.500	—	400
—	1.150	—	1.500	—	400
—	1.235	—	—	—	470
—	1.150	—	1.550	—	375
—	1.150	—	1.550	—	375
—	1.140	—	—	—	540
—	1.140	—	—	—	540
—	1.000-1.100	—	—	—	400
800	875-925	1.090	1.160-1.210	200	200
640	—	835	—	85	—
—	1.320	—	1.700	—	590
—	1.135	—	1.460	—	—
—	1.200-1.400	—	1.600-1.800	—	400
—	1.125	—	1.825	—	500
—	1.135	—	1.535	—	365
—	860	—	1.185	—	270
480	—	655	—	—	—

★ Group-Rates for complete series on request.

GROUP-RATES 1984

Rate p. p. in BF.		Cap. Pers.	Bed & Breakfast	
HOTELS			Room / wash-basin	Room / bath or show.
KNOKKE				
PAVILLON DU ZOUTE	★	80	—	850
DE LA DIGUE	★	70	625	730
THE LINKS	★	60	600	720
BEL-AIR		60	—	650
SQUARE		80	—	500
BLANKENBERGE				
IDEAL		100	—	860-950
SABOT D'OR		120	400-450	—
EUROPE		50	390	—
WENDUINE				
PARKHOTEL		60	480	580
DE HAAN				
BELLE-VUE	★	100	525	700
DE LA PLAGE		80	475	—
BREDENE				
DEVOS	★	100	470	510
EUROPA	★	110	450	550
TONALUC	★	60	400	400
MEEUWENHOF		80	370	—
MIDDELKERKE				
EXCELSIOR	★	70	—	600
NIEUWPOORT				
GROENWHEELDE		150	—	800-850
FLOREAL		500	—	800
SANDESHOVED		260	—	430-480
OOSTDUINKERKE				
ARTAN		50	—	920
GAUQUIE	★	150	410	530
DE PEERDEVISSER		100	305	—

★ see photo

GROUP-RATES 1984

Halfboard		Fullboard		Suppl. Single	
Room / wash-basin	Room / bath or show.	Room / wash-basin	Room / bath or show.	Stand	Bath or show.
—	1.350	—	1.500	—	150
1.040	1.150	1.460	1.560	—	430
1.000	1.120	—	—	150	200
—	975	—	1.150	—	100
—	—	—	—	—	—
—	1.320-1.460	—	1.460-1.620	—	100
600-690	—	700-780	—	—	—
590	—	690	—	—	—
660	770	760	870	200	200
925	1.100	—	—	125	—
725	—	875	—	75	—
495	550	550	610	—	—
580	680	685	785	10%	10%
600	600	740	740	100	100
490	—	650	—	50	—
—	850	—	—	—	150
—	1.200-1.250	—	—	—	300
—	950	—	1.100	—	150
—	650-700	—	800-860	—	—
—	2.000	—	2.400	—	—
630	725	—	—	75	75
480	—	655	—	—	—

★ Group-Rates for complete series on request.

GROUP-RATES 1984

Rate p. p. in BF.		Bed & Breakfast		
HOTELS		Cap. Pers.	Room / wash-basin	Room / bath or show.
GENT				
HOLIDAY-INN	★	240	—	1.026
ASCONA		80	—	800
EUROPA		80	—	800
SINT-JORISHOF		50	750	800
FLANDRIA		130	460	—
AALTER				
CAPITOLE		70	—	575
LIEGE				
HOLIDAY-INN	★	450	—	775-965
BOUILLON				
DE LA POSTE	★	140	600	800
OTTIGNIES				
ETAP		150	—	985
BRUGGE				
HOLIDAY-INN	★	240	—	1.500
NOVOTEL	★	300	—	1.025
PARKHOTEL		100	—	950
EUROP		50	—	940
DE BARGE		50	—	500
BONNE AUBERGE (Zedelgem)	★	50	—	775
KORTRIJK				
BROEL	★	100	—	800
DU NORD		60	—	800
CENTER-BROEL		60	—	700
WAREGEM				
DIANA-PIGEON D'OR	★	80	—	754-880

★ see photo

★ Group-Rates for complete series on request.

GROUP-RATES 1984

Halfboard		Fullboard		Suppl. Single	
Room / wash-basin	Room / bath or show.	Room / wash-basin	Room / bath or show.	Stand	Bath or show.
—	1.495	—	1.945	—	500
—	—	—	—	—	500
—	1.300	—	1.700	—	400
1.560	1.830	2.370	2.640	500	650
—	—	—	—	—	—
—	800	—	—	—	125
—	1.230-1.420	—	1.690-1.875	—	450
1.000	1.200	1.350	1.550	150	400
—	1.360	—	1.740	—	320
—	2.095	—	2.690	—	885
—	1.610	—	1.995	—	540
—	1.450	—	1.950	—	600
—	1.450	—	1.950	—	450
—	900	—	1.150	—	200
—	1.250	—	1.725	—	400
—	1.250	—	1.650	—	400
—	1.100	—	1.400	200	200
—	1.050	—	1.300	350	350
—	1.054-1.180	—	1.354-1.480	—	350

CALL ... 010/32/59/80.33.15 or 50.06.60 or TELEX 0026/81941

HOTELS BRUSSEL



DELTA



DELTA



DIPLOMAT



DIPLOMAT



FORUM



FORUM



ASTORIA



ASTORIA

HOTELS BRUSSEL - ANTWERPEN



AGENDA, Brussel



AGENDA, Brussel



ALFA-LOUISE, Brussel



ALFA-LOUISE, Brussel



ARCADE ST CATHERINE, Brussel



HOLIDAY-INN, Antwerpen



EUROTEL, Antwerpen



EUROTEL, Antwerpen

HOTELS ANTWERPEN - GENT LUIK - BOUILLON



TOURIST, Antwerpen



TOURIST, Antwerpen



NOVOTEL, Antwerpen



HOLIDAY-INN, Gent



HOLIDAY-INN, Luik



HOLIDAY-INN, Luik



DE LA POSTE, Bouillon



DE LA POSTE, Bouillon

HOTELS BRUGGE - KORTRIJK WAREGEM - OOSTDUINKERKE



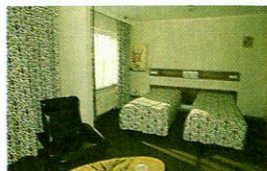
HOLIDAY-INN, Brugge



NOVOTEL, Brugge



LA BONNE AUBERGE, Zedelgem



LA BONNE AUBERGE, Zedelgem



BROEL, Kortrijk



GAUQUIE, Oostduinkerke



DIANA, Waregem



DIANA, Waregem

HOTELS KNOKKE - DE HAAN MIDDELKERKE - BREDENE



PAVILLON DU ZOUTE, Knokke



THE LINKS, Knokke



DE LA DIGUE, Knokke



DE LA DIGUE, Knokke



EXCELSIOR, Middelkerke



EXCELSIOR, Middelkerke



BELLE-VUE, De Haan



EUROPA, Bredene

HOTELS BREDENE - OOSTENDE



TONALUC, Bredene



TONALUC, Bredene



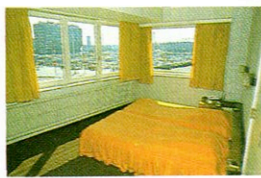
DEVOS, Bredene



PRINCESS, Oostende



BURLINGTON, Oostende



BURLINGTON, Oostende



EUROPE, Oostende



PRADO, Oostende

HOTELS OOSTENDE



BERO



BERO



DANIELLE



DANIELLE



IMPERIAL



IMPERIAL



RESTAURANT YORK



PARTY - CRUISER
"LOVE BOAT PARTY"

CASINO-KURSAAL OSTEND

MID-WEEK MINI-TRIPS

(15 Sept. 83 - 15 May 84)

The „Mid-week Mini-trip“ arrangement includes:

- ★ Your stay in Ostend for 1 or 2 nights on a Bed & Breakfast basis in a first class hotel.
(room with bath/wc)
- ★ A voucher for the value of 300 BF. per person to enjoy a fantastic dinner in the restaurant „Perigord“ or „Fortuna“ of the Casino.
- ★ A welcome drink in the bar „Baccara“ at the Casino.

Arrangement price per person	2 days (1 night)	3 days (2 nights)
1 st Class Hotel (room / bath / wc)	800 BF.	1.400 BF.
Suppl. si	+ 300 BF.	+ 600 BF.

- ★ Midweek Mini-trips are operated from Sunday to Thursday.
- ★ Drinks during the meal are not included.

CARNIVAL WEEKEND

"CARNIVAL WEEKEND"

(2 - 4 March 84)

Oostende is one of the few Belgian towns where Carnival festivities are so intensely revived annually. It seems that our Carnival is eternally animated through the memory of our worldfamed artist, - James Ensor, - the painter of masks, who was also one of the founders of the renowned "Dead Rat" Ball.

Carnival weekend starts on the Friday evening with the "Cimateirestoet", - a lively procession composed of a multitude of masked revellers led by a "Prince" who is pre-elected in the fishermen's quarter of town. The procession ends in tumultuous noise, gaiety and good humour around an immense bonfire. Festivities continue throughout the night in the cafés, bars and dance-halls of the "old port" region.

Saturday is the night of the "Dead Rat" Ball which is held in the specially-decorated halls and salons of the great Casino-Kursaal. The decorations are based on the theme of the Ball which is changed annually.

The weekend terminates on Sunday on the Town Square with another grand procession and the showering of clogs (miniature ones, of course!) onto the revellers and spectators from the Festival Hall balcony. Just imagine the atmosphere of this grand Carnival event!

Oostende Carnival is held annually during the first weekend of March ... a weekend of mirth and jollity!

The "Carnival Weekend" arrangement includes:

- Your stay at Oostende for two nights from the Friday to the Sunday on a "Room and Breakfast" basis, in either a Grade A hotel (room with bath and toilet) or a Grade B hotel (room with bath or shower).
- Entrance to the "Dead Rat" Ball (with table reservation).

CARNIVAL WEEKEND

The "Dead Rat" Ball - 1984

- **Theme:** Carnival in Athens"
- **Clothing:**
Fancy dress or evening dress.
("Dominos" - black, hooded gowns - can be hired at the Casino-Kursaal entrance).
- **Fancy Dress Competition:**
More than 350.000 francs in prizes.
(Registration: 9 p.m. to 10.30 p.m. at the entrance).
- **Table reservations:**
are valid until 10 p.m.
- **Tickets for drinks and cold buffet:**
Only tickets (purchasable at Casino-Kursaal) are accepted in payment.

"Carnival Weekend" programme

- **Friday, 2nd March:**
9 p.m. - "CIMATEIRESTOET" - carnival procession in the fishermen's quarter.
- **Saturday, 3th March:**
9 p.m. - "DEAD RAT" BALL at the Casino-Kursaal
(Theme: "Carnival in Athens")
- **Sunday, 4th March:**
2.30 p.m. - Grand Carnival Procession.
4 p.m. - Miniature Clogs Shower (Town Square)

Arrangement price per person	Weekend (2 nights)
Hotel-category B (room / bath or show)	1.850 BF.
Suppl. single	+ 550 BF.
Hotel-category A (room / bath / wc)	2.150 BF.
Suppl. single	+ 550 BF.

GASTRONOMIC WEEKEND 83/84

The reputation of these weekends, which include a gastronomy dinner at Oostende Casino-Kursaal, is well renowned. It is imperative to reserve in advance as places are often fully booked.

On the 12 Saturday evenings from 22nd October 1983, to 24th March 1984, 12 kitchen-chefs of renowned, French restaurant present their menus. They bring with them certain exclusive, regional ingredients to prepare their particular specialities, ... for which French cuisine is so famous.

Come then to Oostende from the Friday evening in time to partake of an unequalled "aperitif" in the form of our fine, sea ozone!

The "Gastronomy" arrangement includes:

- Your stay at Oostende for either two nights from the Friday or for one night from the Saturday on a "Room and Breakfast" basis, in a Grade A hotel (room with bath and toilet).
- A gastronomic dinner (served from 7.30 p.m. on the Saturday evening) prepared by a French master-chef.
- Free participation in the Casino lottery. (Evening dress recommended).

Arrangement price per person	Weekend (1 night)	Weekend (2 nights)
Hotel-category A (room / bath / WC)	1.950 BF.	2.650 BF.
Suppl. single	+ 250 BF.	+ 500 BF.

GASTRONOMIC WEEKEND 83/84

CALENDER 83/84

22.10.83: LA CREMAILLERE
Avesnes - sur - Helpe

06.11.83: LA BOULE D'OR
Barbezieux

19.11.83: HOSTELLERIE DES BAS RUPTS
Gérardmer

26.11.83: RESTAURANT JACQUES CŒUR
Bourges

03.12.83: ROYAL CHAMPAGNE
Champillon

10.12.83: HOTEL DU CHEVAL BLANC
Sept - Saulx

21.01.84: HOSTELLERIE DU VAL SUZON - Val Suzon
RESTAURANT DES GOURMETS - Marsannay - La - Côte
RESTAURANT DE LA CHOQUETTE - Dijon
RESTAURANT DE LA COTE D'OR - Nuits St. Georges

28.01.84: HOTEL DU CHEVAL BLANC
Vire

25.02.84: HOTEL DU GRAND PARIS
Digne

10.03.84: HOTEL DE LA PLAGE
Ste anne - La - Palud

17.03.84: LE COQ HARDY
Bougival

23.03.84: CHATEAU DE CASTEL - NOVEL
Varetz - Brive

★ **NOTE:** 200 BF. supplement per person for menus with lobster, cray-fish or goose-lever.

LOVE BOAT PARTY

Break away from the ordinary
Discover a party with a difference
We have a dream for sale

PROGRAMM

Arrival in Ostend on Saturday afternoon.

Embarkation on the "Party-Boat" at 7 p.m.

We leave Ostend at 7.30 p.m. for a romantic boat-trip to Bruges. While enjoying a gastronomic dinner (love at first bite) by candlelight our guests will be entertained by a gypsy-band who plays Austrian and Hungarian melodies. Dinner and wine are served by friendly professional waiters. The towers of Bruges appear along the canals after about two hours.

In Bruges the boat turns and sails back to Ostend.

On the way back you will get an enchanting scenery as the river-side is illuminated and our guests can dance to lovely romantic music played by the same band. All drinks are available at extra low prices. The boat arrives back in Ostend at about one o'clock.

Sunday morning after breakfast in the hotel, free time for shopping.

MENU (included in the price)

- Aperitive "Love Boat"
- Smoked Scottish Salmon extra sweet
- Fresh Vegetable soup with cream
- "Medaillon" of Turkey with cherries and braised chicory
- Ice-Bomb "Surprise"
- Coffee and sweets

Weekend in Ostend with Mini-Cruise to Bruges

Dinner by candlelight and live music

DATES

- 29 - 30 october 1983
- 26 - 27 november 1983
- 31 december - 1 jauary 1983-84
NEWYEAR CELEBRATION ON BOARD
- 4 - 5 february 1984
- 3 - 4 march 1984
- 7 - 8 april 1984
- 5 - 6 may 1984
- 2 - 3 juni 1984

For a minimum of 100 persons, other dates can be obtained
(also midweek arrangements)

RATES & CONDITIONS

- price, all- inclusive with bed and breakfast in hotel with private bath or shower, wash basin and toilet. Also with boat-excursion and dinner by candlelight included.
1.850 BF. (single supplement 200 BF.)
- same tour, but bed and breakfast in hotelroom with wash-basin. - 1.650 BF. (single supplement 100 BF.)
- all prices are net and valid for groups of minimum 20 persons.
- there is 1 person free per 40 persons.
- supplementary day:
arrival in Ostend friday afternoon
dinner in hotel
breakfast on saturday morning
+ 950 BF. (rooms with private facilities)
+ 700 BF. (rooms with wash-basin)
- the transfers to & from the boat are not included and can be arranged upon request for parties who do not dispose of their own coach.

★ See photograph of the boat in the picture-series enclosed.

OSTEND FOR CONGRESSES & SEMINARS

COMMUNICATIONS



Ostend airport (4 miles from the conference centres). Brussels National airport is one hour drive from Ostend.



Frequent daily ferry services with Great Britain (Ostend-Dover) with connections every hour by train to Brussels and abroad.



Important railway centre and point of departure for the great European Expresses (TEE, Nord Express, etc.).



Centre of several Europabus services.

FACILITIES AND EQUIPMENT

Casino-Kursaal (10,000 sq.m.) - 8 halls for congresses, assemblies, exhibitions, spectacles and banquets. - Auditorium (+ stage) 1,620 seats - Ambassadors hall (+ stage) 1,000 - Conference room 240 - Montrose room 200 - Reading room 250 - Hall of honour 2,300 - Foyer 600 - Entrance hall (for exhibitions).

Cloakrooms, desks and secretariat offices in the entrance hall, a restaurant (90 seats), coffee-shop (160 seats), night-club, gambling salons and several bars. (All rooms are fully air-conditioned.)

Other meeting places

Media Centre (10,000 sq.m.) Exhibition and Convention Centre. Ideal for large assemblies, banquets and trade fairs.

Festival Hall - 3 halls for conferences, banquets and exhibitions.

Ostend Hall - Large exhibition hall can be divided in separate smaller halls (8,200 sq.m.)

Casino-Kursaal - Media-Centre - Festival Hall

Sound, projection and film installations (16/35 mm.) - Simultaneous translation possible in all the halls - Reception, technical and decorating staff, secretariat, hostesses - Press and mecanografic facilities, etc.

ACCOMMODATION

Over 100 approved hotels (7,000 beds) offer a great variety of class, price and location.

Over 1,500 first-class beds mainly in the conference hotels which offer another 30 conference rooms for seminars.

SPECIAL SERVICES

Our service has proved to be of very valuable assistance to the convention organisers. Our experienced staff takes care of budgeting, information, reservation of hotel accommodation, press, protocol, etc.

What makes it unique is that this service is offered free of charge.

Convention Bureau reserves hotel accommodation and also assists in other matters connected with conventions, such as travel, meals, receptions, study visits, excursions, etc. Our nonprofit organisation is entirely at your service!

INFO: CONGRESS BUREAU

Promotie Toerisme Oostende v.z.w.

Feestpaleis - bus 5 - Wapenplein - 8400 OSTEND - Belgium

Telephone: 059/80.33.15 - 50.06.60 - Telex: 81941 - TOPROS-B.

CALENDAR 1984

2 - 4 March	Carnival Weekend Ostend
4 March	Carnival Grand Parade Alost
13 May	„Cats” Festival & Parade Ypres
31 May	Procession of the Holy Blood Bruges
9 - 10 June	Showband 1984 (Int. Drum Band Festival) Ostend
20 - 24 July	Rythm'n Jazz Festival Ostend
26 August	Flower Pageant Blankenberge
29 Sept / 6-13 Oct.	Beer Festival Wieze
6/13/20 Oct	Beer Festival Diksmuide
17 Nov.	Bowens Darts Tournament Ostend
24 Dec. / 1 Jan.	Circus-Circus Festival Ostend

BOOKING PROCEDURE

How to make a group-reservation.

1. Contact P.T.O. by telephone, telex or letter with your request.
2. P.T.O. offers you a hotel on which an option is taken on your behalf for a determined period.
3. In case of a confirmation P.T.O. will forward you a group-contract consisting of 4 copies:
 - white copy: for client
 - green copy: to be returned to P.T.O - duly signed as confirmation
 - pink copy: for hotel
 - yellow copy: for P.T.O.
4. Upon receipt of our group-contract a first non-refundable deposit of £ 15 should be paid immediately into account n° 01-08541973 of P.T.O. (Ostend) at the Natwest Bank, 25, Market Square, Dover (Kent). Or by cheque for P.T.O. (Ostend) to same bank. This deposit should be with our bank within 14 days after receipt of the contract. Non-payment makes the booking subject to cancellation.
5. A second refundable deposit of 25% of the sales value (as detailed on the group-contract) has to be paid to account n° 750-9018473-56 of PROMOTIE TOERISME OOSTENDE at the AN-HYP Bank, Wapenplein, 8, 8400 Ostend. Or by bankersdraft in Belg. Frs. for P.T.O. (Ostend) to our address. Non-payment makes the booking subject to cancellation.
6. A roominglist must be mailed directly to the hotel 14 days prior to arrival.
7. The balance of the invoice is to be paid in cash or bankersdraft in Belg. Frs. directly to the hotel before departure of the group, except when agreed differently in advance.

Booking conditions

1. All booking must be confirmed in writing (letter or telex).
2. Booking are subject to cancellation if the deposits are not reserved as detailed on the group-contract in question.
3. Cancellations fees:
 - Up to 30 days prior to arrival: no penalty
 - From 30 to 8 days prior to arrival: deposit will be kept by the hotel.
 - Within 8 days prior to arrival: 50% of the sales value of the first night is due.
 - Less then 24 hrs prior to arrival of in case of "no-show" (even partial); 100% of the sales value of the first night is due.
4. The prices given in the confidential tariff are net and based on tariffs, rates and taxes currently in force. Consequently they are liable to changes.
5. Prices quoted are liable to changes during specific periods of the year (Carnival - Beer Festivals - etc.).
6. P.T.O. acts in good faith and cannot be responsible for the acts, defaults or delays of any agents, hotels, coach operators, guides, restaurants or any other persons howsoever caused.
7. In case of dispute, only the Law Courts of Ostend are cognizant.

Oorsprong :

Invent. nr. :

2024/0114

DE PLATE



PROMOTIE TOERISME OOSTENDE v.z.w.
FEESTPALEIS - BUS 5 - WAPENPLEIN
8400 OOSTENDE (Belgium) TELEX 81941 - TOPROS B
☎ 010/32/59/80.33.15 or 50.06.60 or 70.64.27